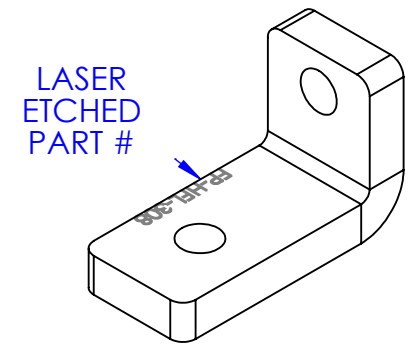
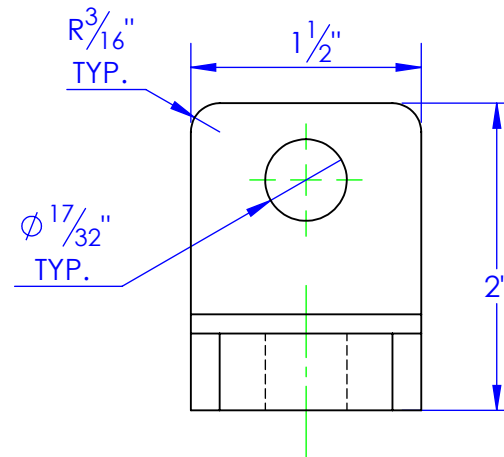
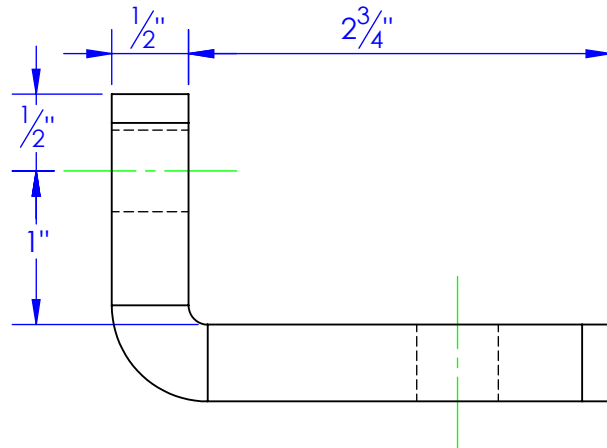
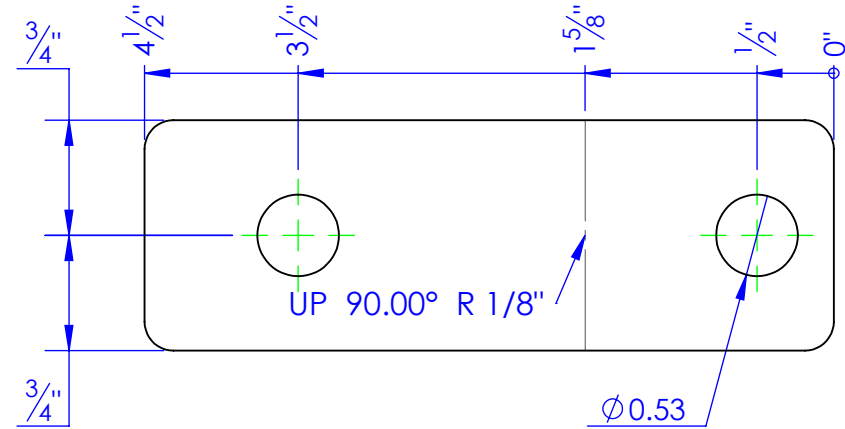
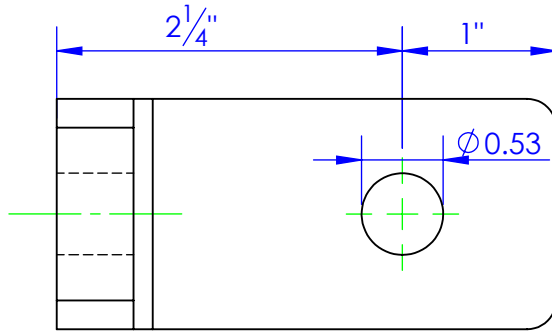
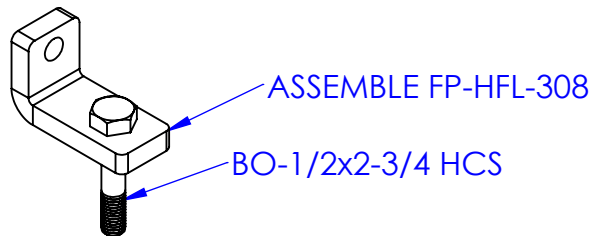


PART NUMBER	DESCRIPTION	MATERIAL
FP-HFL-308	CHAIN TIGHTNER ASSEMBLY	1/2" HRS.

REV.	DESCRIPTION	DATE	APPROVED
B	UPDATED TO ONE PIECE FROM FP-HFL-309 & 310	9/20/2012	



**REQD QTY: 2**



**PROPRIETARY AND CONFIDENTIAL**  
THE INFORMATION CONTAINED IN THIS DRAWING IS THE SOLE PROPERTY OF TRIPLE C INC. ANY REPRODUCTION IN PART OR AS A WHOLE WITHOUT THE WRITTEN PERMISSION OF TRIPLE C INC. IS PROHIBITED.

DIMENSIONS ARE IN INCHES TOLERANCES: FRACTIONAL $\pm 1/16$ ANGULAR: MACH $\pm 1$ BEND $\pm$ TWO PLACE DECIMAL $\pm 0.10$ THREE PLACE DECIMAL $\pm 0.005$		NAME	DATE
MATERIAL 1/2" HRS.		DRAWN	HEATH 3/15/2013
DO NOT SCALE DRAWING		PART #	FP-HFL-308
		ASM #	
		COMMENTS:	
		CHAIN TIGHTNER ASSEMBLY	

P.O. BOX 248, SABETHA, KS 66534			
<b>TRIPLE C</b> INC.			
SIZE <b>A</b>	DWG. NO. <b>40-1600 B</b>	REV. <b>B</b>	
SCALE: 1:1.25	WEIGHT: 0.91	SHEET 1 OF 1	